

ColourBrain® Furniture 4.0 – Technologically Leading in Furniture Inspection.



Defect detection with highest precision.

Baumer presents next innovation.

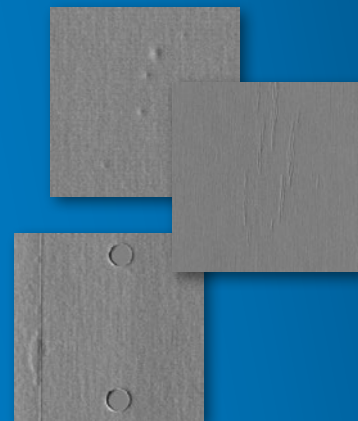
The inspection system *ColourBrain® Furniture 4.0* is the technology leader in the double-sided inspection of foil-coated, melamine-coated and lacquered furniture panels. The outcome are impressive inspection results: Surface defects such as bubbles, dents, fine scratches or shiny spots are precisely recognized in their smallest size - whether in, diagonally or transversely to the feed direction.

An optional drill hole monitoring also checks for the integrity of drilling holes and profile deviations of grooves. The *ColourBrain® Furniture 4.0* system can be used both in series production and in batch-1 production for defect detection and process optimization. In the most advanced stage the brand new *FlashingSky®* illumination in combination with the first-class *multiReflex®* inspection module to identify additionally any gloss defects.

Our defect detection, optimizes your production.

Your benefits at a glance:

- Objective detection of smallest defects, independent of decor and structure.
- *Q-Brain®* defect classification and assignment in the production process.
- Improve your product quality through immediate process optimization.
- Monitoring of drill holes and grooves.
- The system is suitable for both, series and batch-1 operation.



Product data *ColourBrain*[®] Furniture 4.0

| | |
|-----------------------------|---|
| Inspection objects | Foil-, melamine-coated and lacquered furniture boards |
| Component widths | 800 mm, 1.300 mm, 2.200 mm |
| Component heights | 3-60 mm, variable by automatic height adjustment |
| Production speed | 0-100 m/min |
| Material flow types | Series, batch-1, in tracks, component carpet, panel under foil, endless |
| Supported Transport Systems | Belt strap, surface belt, roller transport (calibrated rollers) |

Fast Installation & Easy to Maintain.

- The delivery of a pre-set system ensures a short installation & commissioning. In addition, the ease of cleaning and maintenance, due to the closed system structure with integrated cleaning, contributes to high system availability.

Planning and Investment Security.

- Should your requirements change, thanks to our modular system design, extensions are possible at any time - hardware as well as software side.

Integration in your Transport System.

- The integration of our system into your existing transport system, reduces your acquisition costs and allows to place the system in any production line in the world.

Low Space Requirement in your Production.

- The compact design allows fast installation into your production environment. The system is available in three system sizes and thus adapts to your production conditions.

Flexible Connectivity.

- High flexibility through predefined interface protocols for machine-to-machine communication.

Intuitive & Ease of Use.

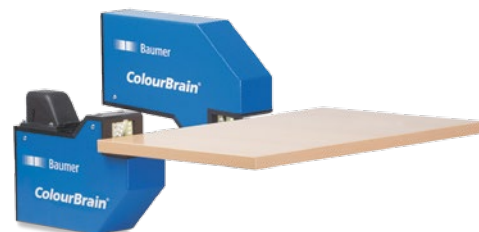
- The user interface provides an easy-to-understand overview about complex information and focuses on it to the essentials for the plant operator.

The modular system structure allows optimal adaptation to your production and your requirements.



Perfect extension.

ColourBrain[®] Edge 4.0, compact camera heads with integrated LED illumination monitor every edge in your furniture production with the highest resolution and scan rate and complementing the surface inspection in ideal way.



Baumer Inspection GmbH
Lohnerhofstrasse 6 · DE-78467 Konstanz · Germany
Phone +49 (0)7531 99 43 0 · Fax +49 (0)7531 99 43 44
info@baumerinspection.com · www.baumerinspection.com

More information on:
www.baumerinspection.com

