

ColourBrain® Edge 4.0 – Unrivaled in Edge Inspection.



Compact, robust and quickly integrated.

360° Inspection – Focus on the edge.

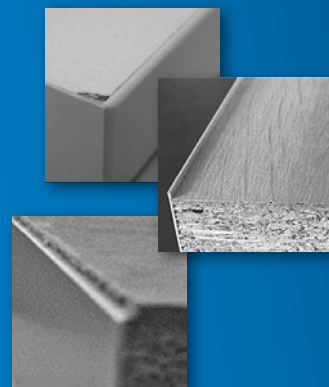
The *ColourBrain® Edge 4.0* inspection system is the next step in the improvement of defect detection and the consistent revision of all user interfaces towards a system-wide and uniform look & feel in user interface. The system is used to inspect furniture parts in edge banding machines from various manufacturers. The detection of edge chipping, open glue joints, partially or completely missing edges and protruding edge bands are just as much part of the functional scope as the detection of geometric features such as grooves and drill holes and their

differentiation from defects. The system can be used either in series production or in batch 1 production for defect detection and process optimization and ideally complements the *ColourBrain® Furniture 4.0* system. Standardized interfaces reduce the effort for integration into the processing machines to a minimum. The outstanding strength of the inspection system lies in the detection of topographical defects both on artificial edges and on veneered or wood edges. For this purpose, directional line lasers are used in addition to a proven incident light method.

Our defect detection, optimizes your production.

Your benefits at a glance:

- Reliable detection of topographical defects, such as edge bands that are too high or breakouts.
- Defect detection on plastic, veneer and wood edges.
- Folds, grooves & drill holes are detected and distinguished from defects.
- *Q-Brain®* classification of defects and allocation in the production process.
- Intended for series and batch-1 production.



Product data *ColourBrain® Edge 4.0*

Inspection objects	Glued and lasered edge bands, veneer ribbon, real wood edges on furniture parts
Component widths/lengths	100-5.000 mm
Components heights	6-60 mm
Production speed	0-80 m/min
Material flow types	Series, batch-1

Easily Integrated into your Edge Bander.

- The compact design allows fast installation into your edge banding machine.

Fast Installation & Easy to Maintain.

- The delivery of a pre-set system ensures a short installation & commissioning.

Planning and Investment Security.

- Should your requirements change, thanks to our modular system design, extensions are possible at any time - hardware as well as software side.

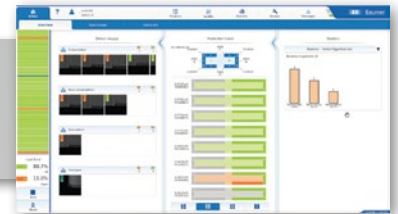
Flexible Connectivity.

- High flexibility through predefined interface protocols for machine-to-machine communication.

Intuitive & Ease of Use.

- The user interface provides an easy-to-understand overview about complex information and focuses on it to the essentials for the plant operator.

The new intuitive user interface enables a cross-system look & feel of all inspection systems in furniture manufacturing.



Your Production efficiently designed.

The *ColourBrain® ReworkStation* is the cornerstone of an efficient batch-1 manufacturing. After scanning, all inspected components are provided with a barcode and the underlying defect logs are stored in a *Q-Live®* database. Defective components are ejected at a defined location by means of I/O signals and the defects are interrogated using the barcode. The quality responsible is now directly shown on the user interface the defect type and the position. A quick assessment of whether reworking is possible or must be directly re-produced can be done. A merger of several production lines in one rework station is possible.

The advantages are obvious:

■ Process Security

The direct and immediate intervention in the production allows for the rapid and efficient reduction of residues and accelerates your Supply Chain.

■ Process Optimization

The surface & edge inspection guides you in optimizing your production. The *ColourBrain® ReworkStation* is a helpful extension to optimize your batch-1 production.



Baumer Inspection GmbH
Lohnerhofstrasse 6 · DE-78467 Konstanz · Germany
Phone +49 (0)7531 99 43 0 · Fax +49 (0)7531 99 43 44
info@baumerinspection.com · www.baumerinspection.com

More information on:
www.baumerinspection.com

