

## *ColourBrain<sup>®</sup> RawBoard 4.0* – New Benchmarks in the Raw Panel Inspection.



### Optimized Processes, increase your Performance.

Baumer analyzes the defect cause for immediate adjustment.

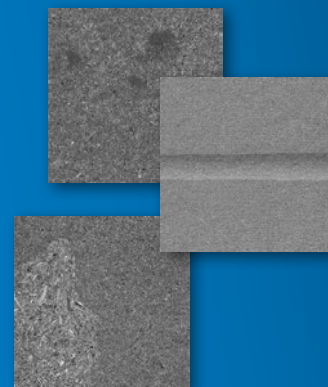
With the inspection system *ColourBrain<sup>®</sup> RawBoard 4.0*, Baumer sets new standards in the double-sided inspection of chipboards and MDF / HDF boards. Typical process errors such as grinding defects, damage to the surface and in the edge area as well as contamination caused by oil, water or dust spots are stably identified. Using standardized interfaces, the *ColourBrain<sup>®</sup> RawBoard 4.0* inspection system can be easily and quickly integrated into customary line controls.

The slim design and the concept of a „self-sufficient unit“ lead to a significantly reduced space requirement in the production environment. The new and unique *FlashingSky<sup>®</sup>* illumination module in combination with the proven, in-house developed line scan camera results in a powerful inspection unit that reliably detects surface defects at the highest transport speeds and in harsh environmental conditions.

### Our defect detection, optimizes your production.

Your benefits at a glance:

- Automatic, optical inspection of raw boards after the grinding in the longitudinal pass.
- Highest transport speeds in harsh environmental conditions.
- New, unique *FlashingSky<sup>®</sup>* illumination module.
- *Q-Brain<sup>®</sup>* defect classification and assignment in the production process.
- Improve your quality through immediate process optimization.



# Product data *ColourBrain® RawBoard 4.0*

Inspection objects	Wood Fiber Board (MDF/HDF, chipboard)
Component widths	1.550 mm, 2.500 mm, 2.800 mm
Component heights	2-60 mm, variable by automatic height adjustment
Production speed	0-150 m/min
Material flow types	Single track series
Supported Transport Systems	Belt strap, surface belt, roller transport (calibrated rollers)

## Fast Installation & Easy to Maintain.

- The delivery of a pre-set system ensures a short installation & commissioning. In addition, the ease of cleaning and maintenance, due to the closed system structure with integrated cleaning, contributes to high system availability.

## Planning and Investment Security.

- Should your requirements change, thanks to our modular system design, extensions are possible at any time - hardware as well as software side.

## Integration in your Transport System.

- The integration of our system into your existing transport system, reduces your acquisition costs and allows to place the system in any production line in the world.

## Low Space Requirement in your Production.

- The compact design allows fast installation into your production environment. The system is available in three system sizes and thus adapts to your production conditions.

## Flexible Connectivity.

- High flexibility through predefined interface protocols for machine-to-machine communication.

## Intuitive & Ease of Use.

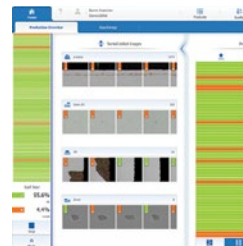
- The user interface provides an easy-to-understand overview about complex information and focuses on it to the essentials for the plant operator.

The modular system structure allows optimal adaptation to your production and your requirements.



## Intelligent Process Optimization.

The *ColourBrain® RawBoard 4.0* system can optionally be combined with the *Q-Live®* analysis tool. *Q-Live®* connects Baumer systems with each other across locations, thus providing you a complete overview of all your production sites. We provide you an optimal overview of the current production and the resulting statistical analyzes.



Baumer Inspection GmbH  
Lohnerhofstrasse 6 · DE-78467 Konstanz · Germany  
Phone +49 (0)7531 99 43 0 · Fax +49 (0)7531 99 43 44  
info@baumerinspection.com · www.baumerinspection.com

More information on:  
[www.baumerinspection.com](http://www.baumerinspection.com)

